



**Ensemble Auditions - Horn
University of Nebraska Lincoln
Spring 2026**

Neatly complete this form and bring it with you to your audition.

Name: _____ **Email:** _____

This audition is specifically for the UNL Symphony Orchestra. If you are only interested in auditioning for one of the bands, or if you are not placed in the UNL Orchestra following this audition, please refer to the instructions founds at <https://arts.unl.edu/music/orchestra-audition-information/> for your next steps.

Orchestra placement results will be emailed within 24 hours.

Audition Material:

- 1. Dukas: The Sorcerer's Apprentice. Rehearsal 22 to 6 after Rehearsal 25.**
- 2. Ravel: Pavane for a Dead Princess, Horn 1 (Horn in G). Measures 1-11.**
- 3. Mussorgsky: Night on Bald Mountain. Letter L to Letter N.**

4 **[22]**

1^{er} et 2^e CORs

Au mouv^t



[23]



[24]

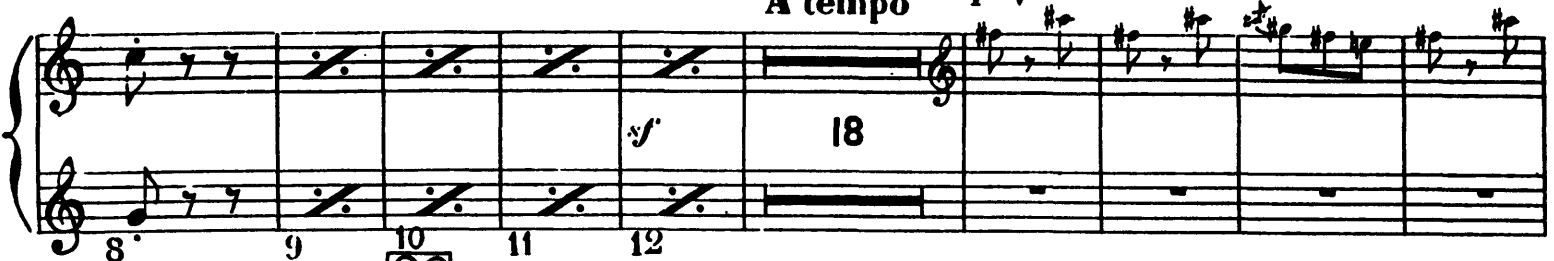


[25] Poco string.



A tempo

1^{er} Violon



[26]

Cors Soli

mf scherzando

poco cresc.



[27]

Cl. Bass Violon



Maurice Ravel

Pavane pour une infante défunte

Cors simples en Sol

1^{er} Cor. *SOLO* *pp*

2^d Cor. *pp*

p *pp expressif*

pp *mf*

f

CORNI I. II. in F.**H** *Piu sostenuto.*

Section H, *Piu sostenuto.* This section consists of two systems of music for Horns I and II. The first system features a treble and bass staff with a key signature of one flat (F major/D minor). The music is marked *p* (piano) and includes dynamic markings *mf* (mezzo-forte) and *f* (forte). The second system continues the melody and accompaniment, with a key signature change to two flats (B-flat major/A-flat minor) and a final *f* marking.

Section K, *Tempo I.* This section continues the music for Horns I and II. It features a treble and bass staff with a key signature of two flats. The music is marked *f* (forte) and includes dynamic markings *mf* (mezzo-forte) and *f* (forte). The section concludes with a double bar line.

(Allegro feroce.)

Section L, *(Allegro feroce.)* This section is marked *f* (forte) and includes dynamic markings *mf* (mezzo-forte) and *f* (forte). It features a treble and bass staff with a key signature of two flats. The music is characterized by a fast, driving rhythm.

Section M. This section continues the music for Horns I and II. It features a treble and bass staff with a key signature of two flats. The music is marked *mf* (mezzo-forte) and includes dynamic markings *f* (forte) and *ff* (fortissimo). The section concludes with a double bar line.

Section N. This section continues the music for Horns I and II. It features a treble and bass staff with a key signature of two flats. The music is marked *mf* (mezzo-forte) and includes dynamic markings *f* (forte) and *ff* (fortissimo). The section concludes with a double bar line.